



### 3 bed terraced house to buy in

Collingwood Road, Wirral, Merseyside,  
CH63 7RL

**£160,000** Starting Bid

 x3  x1  x2

Tenure

**Freehold**

On Street parking

### Property features

- ✓ Being Sold via Secure Sale Online Bidding. Terms & Conditions apply.
- ✓ Three Bed Mid Terrace
- ✓ Close To Bebington Village
- ✓ Council Tax Band - A
- ✓ EPC Rating C

## Key Information

- ✓ Council Tax: Band A
- ✓ EPC Rating: C
- ✓ Heating supply: Gas
- ✓ Electric supply: National Grid
- ✓ Water supply: Direct mains water
- ✓ Broadband: Cable

## Description

We are delighted to bring to the market this THREE BEDROOM mid terrace property on Collingwood Road in Bebington. Ideally situated close to the local amenities of Bebington Village and Port Sunlight train station.

In brief the property affords: hall, lounge, dining room, kitchen. Upstairs there are three bedrooms and a bathroom.

Council Tax Band: A

Tenure: Freehold

Price: Starting Bid £160,000

Property Type: Terraced House

Parking: On Street

Year built: 1950

Construction materials: Brick and block

Risk of floods and or erosion: No

Flooded in last 5 years: No

Flood defences: No

Planning permissions or proposals for development: No

Coalfield or mining area: No

Listed property: No

Conservation area: No

Public rights of way: No

Adaptions for accessibility: No

Restrictions: No

Required access: No

Heating: Gas

Electric: National Grid

Water: Direct mains water

Water meter: Yes

Sewerage: Standard UK domestic

Air conditioning: No

Broadband: Cable

## **Living Room**

3.10 x 4.39 (10'2" x 14'4") - Double glazed window, radiator, power point

---

## **Dining Room**

3.59 x 3.55 (11'9" x 11'7") - Double glazed bay window, radiator, power point

---

## **Kitchen**

1.85 x 2.88 (6'0" x 9'5") - Wall and base units, inset sink, integrated oven and electric hob, space and plumbing for washing machine, space for fridge, door to rear

---

## **Bedroom 1**

3.11 x 3.85 (10'2" x 12'7") - Double glazed bay window, radiator, power point

---

## **Bedroom 2**

3.12 x 4.11 (10'2" x 13'5") - Double glazed window, radiator, power point

---

## **Bedroom 3**

1.85 x 2.93 (6'0" x 9'7") - Double glazed window, radiator, power point

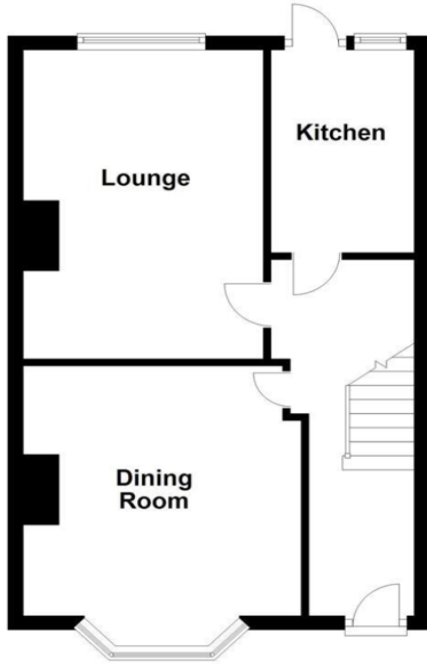
---

## **Bathroom**

1.82 x 1.82 (5'11" x 5'11") - Comprising bath with shower above, wash hand basin, W.C, towel rail, part tiled walls

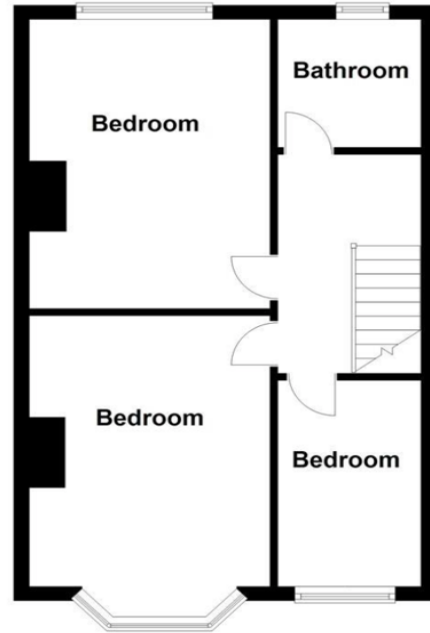
### Ground Floor

Approx. 40.9 sq. metres (439.8 sq. feet)



### First Floor

Approx. 41.0 sq. metres (441.6 sq. feet)



Total area: approx. 81.9 sq. metres (881.4 sq. feet)

Whilst every attempt has been made to ensure the accuracy of this floor plan, measurements of doors, windows, rooms and any other items are approximate and no responsibility is taken for any error, omission or mis-statement. The plan is for illustrative purposes only and should be used as such by any prospective purchaser. The services, systems and appliances shown here have not been tested and no guarantee to their operability or efficiency can be given.  
Plan produced using PlanUp.

Energy Efficiency Rating		Current	Potential
<i>Very energy efficient - lower running costs</i>			
(92-100) <b>A</b>			
(81-91) <b>B</b>			89
(69-80) <b>C</b>		69	
(55-68) <b>D</b>			
(39-54) <b>E</b>			
(21-38) <b>F</b>			
(1-20) <b>G</b>			
<i>Not energy efficient - higher running costs</i>			
<b>England, Scotland &amp; Wales</b>		EU Directive 2002/91/EC	

Collingwood Road, Wirral, Merseyside, CH63 7RL

Contact your local branch today for more information on this property:

**1 1, 1, 1, 1, [www.bella-properties.co.uk](http://www.bella-properties.co.uk)**

These particulars, whilst believed to be accurate are set out as a general outline only for guidance and do not constitute any part of an offer or contract. Intending purchasers should not rely on them as statements of representation of fact, but must satisfy themselves by inspection or otherwise as to their accuracy. No person in this firm's employment has the authority to make or give any representation or warranty in respect of the property.

