



## 2 bed apartment to buy in IG9

Palmerston Road, Buckhurst Hill, Essex,  
IG9 5LN

**£325,000** Starting Bid

 x2  x1  x1

Tenure

**Leasehold**

Residents parking

## Property features

- ✓ Being Sold via Secure Sale online bidding. Terms and Conditions
- ✓ First Floor
- ✓ Two Bedrooms
- ✓ Great Size Throughout
- ✓ EPC Rating D

## Key Information

- ✓ Council Tax: Band C
- ✓ EPC Rating: D
- ✓ Heating supply: Gas
- ✓ Electric supply: National Grid
- ✓ Water supply: Direct mains water
- ✓ Mobile signal: Good

## Description

Ibrox Court, Buckhurst Hill - Offered with No Onward Chain

This spacious first-floor maisonette is ideally situated just moments from Queens Road and Buckhurst Hill Underground Station (Central Line), offering both convenience and comfort.

Accessed via its own private entrance on Westbury Lane, the property features a bright dual-aspect reception room, two double bedrooms, a well-proportioned kitchen, and a family bathroom.

The south-facing enclosed balcony provides a sunny outdoor space and could easily be reverted to an open balcony to enhance the outlook (subject to freeholders permission).

Additional benefits include ample loft storage and on-site permit parking.

Location:

Ibrox Court enjoys a highly desirable position just minutes from Buckhurst Hill Station, as well as the boutique shops, cafés, and restaurants of Queens Road, offering a vibrant mix of local amenities.

Council Tax Band: C

Tenure: Leasehold

Length of Lease: 100

Annual Ground Rent Amount: £75.00

Annual Service Charge Amount: £1,200.00

Price: Starting Bid £325,000

Property Type: Apartment

Parking: Residents

Year built: 1930

Construction materials: Brick and block

Risk of floods and or erosion: No

Flooded in last 5 years: No

Flood defences: No

Planning permissions or proposals for development: No

Coalfield or mining area: No

Listed property: No

Conservation area: No

Public rights of way: No

Adaptions for accessibility: No

Restrictions: No

Required access: No

Heating: Gas

Electric: National Grid

Water: Direct mains water

Water meter: Yes

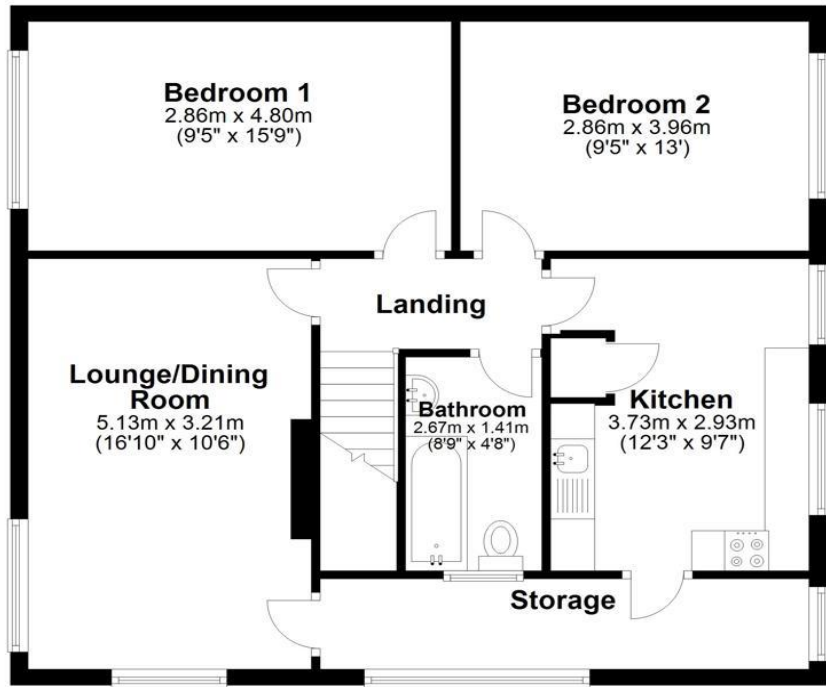
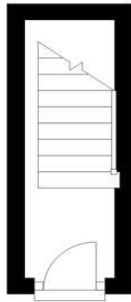
Sewerage: Standard UK domestic

Air conditioning: No

Mobile signal coverage: Good

**First Floor**  
Approx. 70.8 sq. metres (761.9 sq. feet)

**Ground Floor**  
Approx. 33 sq. metres (35.4 sq. feet)



Total area: approx. 74.1 sq. metres (797.3 sq. feet)

Energy Efficiency Rating		
	Current	Potential
<i>Very energy efficient - lower running costs</i>		
(92-100) <b>A</b>		
(81-91) <b>B</b>		
(69-80) <b>C</b>		79
(55-68) <b>D</b>	63	
(39-54) <b>E</b>		
(21-38) <b>F</b>		
(1-20) <b>G</b>		
<i>Not energy efficient - higher running costs</i>		
<b>England, Scotland &amp; Wales</b>	EU Directive 2002/91/EC	

Palmerston Road, Buckhurst Hill, Essex, IG9 5LN

Contact your local branch today for more information on this property:

**1 1, 1, 1, 1, [www.bella-properties.co.uk](http://www.bella-properties.co.uk)**

These particulars, whilst believed to be accurate are set out as a general outline only for guidance and do not constitute any part of an offer or contract. Intending purchasers should not rely on them as statements of representation of fact, but must satisfy themselves by inspection or otherwise as to their accuracy. No person in this firm's employment has the authority to make or give any representation or warranty in respect of the property.

