



Auction

3 bed terraced house to buy in

Penshaw Close, Liverpool, Merseyside,
L14 8YN

£135,000 Starting Bid

🏠 x3 🚗 x1 🚲 x1

Tenure

Leasehold

Driveway parking

Property features

- ✓ 3 spacious bedrooms
- ✓ Cosy reception room
- ✓ 872 sq ft of space
- ✓ Ideal family home
- ✓ EPC Rating C

Key Information

- ✓ Council Tax: Band A
- ✓ EPC Rating: C
- ✓ Heating supply: Gas
- ✓ Electric supply: National Grid
- ✓ Water supply: Direct mains water
- ✓ Broadband: ADSL copper wire
- ✓ Mobile signal: Good

Description

Welcome to this charming end-terrace house located on Penshaw Close in Liverpool. This delightful property, built in 2005, offers a modern living experience with a generous space of 872 square feet, making it an ideal home for families or professionals alike.

As you enter, you are greeted by a welcoming reception room that provides a perfect setting for relaxation or entertaining guests. The house boasts three well-proportioned bedrooms, ensuring ample space for everyone. The two bathrooms add convenience and comfort, catering to the needs of a busy household.

The layout of the home is thoughtfully designed, allowing for a seamless flow between the living areas and bedrooms. Natural light floods the interiors, creating a warm and inviting atmosphere throughout.

Situated in a peaceful neighbourhood, this property benefits from its proximity to local amenities, schools, and parks, making it an excellent choice for those seeking a balanced lifestyle.

Whether you are looking to settle down or invest, this end-terrace house on Penshaw Close presents a wonderful opportunity to own a modern home in a vibrant part of Liverpool. Do not miss the chance to make this lovely property your own.

Lounge - 16' 4" x 13' 6" - The lounge is a bright and spacious room featuring a large window allowing plenty of natural light to fill the space. The staircase is positioned along one wall, complemented by a neutral carpet and crisp white walls, creating a fresh and welcoming atmosphere.

Kitchen/Breakfast Room - 13' 5" x 8' 9" - The kitchen/breakfast room is well-proportioned and offers a good range of wood-style cabinetry with integrated appliances and a gas hob with extractor above. The room benefits from a corner window and French doors leading to the rear garden, creating an airy, practical space for cooking and casual dining.

W.C. - The downstairs cloakroom is a compact yet functional space fitted with a WC and a small pedestal basin. Light floods in through a slim window, enhancing the clean, crisp white decor and practical flooring.

Bedroom 1 - 13' 6" x 10' 2" - Bedroom 1 is a comfortable double room, featuring a large window that fills the room with light. Neutral carpeting and white walls provide a calm and adaptable backdrop, while a built-in wardrobe offers useful storage space.

Bedroom 2 - 10' 1" x 6' 5" - Bedroom 2 is a smaller room suitable as a single bedroom or study, featuring a modest window, carpeted flooring, and white walls that contribute to a bright and versatile space.

Bedroom 3 - 9' 10" x 6' 10" - Bedroom 3 is a cosy single room with a window overlooking the rear garden. It is neutrally decorated with carpet underfoot, perfect for a child's bedroom or home office.

Bathroom - 6' 9" x 6' 7" - The bathroom features a white suite comprising a bath with an overhead shower, a pedestal basin, and a WC. The walls around the bath are tiled, and the room includes a frosted window that provides privacy while letting in natural light.

Council Tax Band: A

Tenure: Leasehold

Length of Lease: 966

Price: Starting Bid £135,000

Property Type: Terraced House

Parking: Driveway

Year built: 2005

Construction materials: Brick and block

Roofing type: Slate tiles

Risk of floods and or erosion: No

Flooded in last 5 years: No

Flood defences: No

Planning permissions or proposals for development: No

Coalfield or mining area: No

Listed property: No

Conservation area: No

Public rights of way: No

Adaptions for accessibility: No

Restrictions: No

Required access: No

Heating: Gas

Electric: National Grid

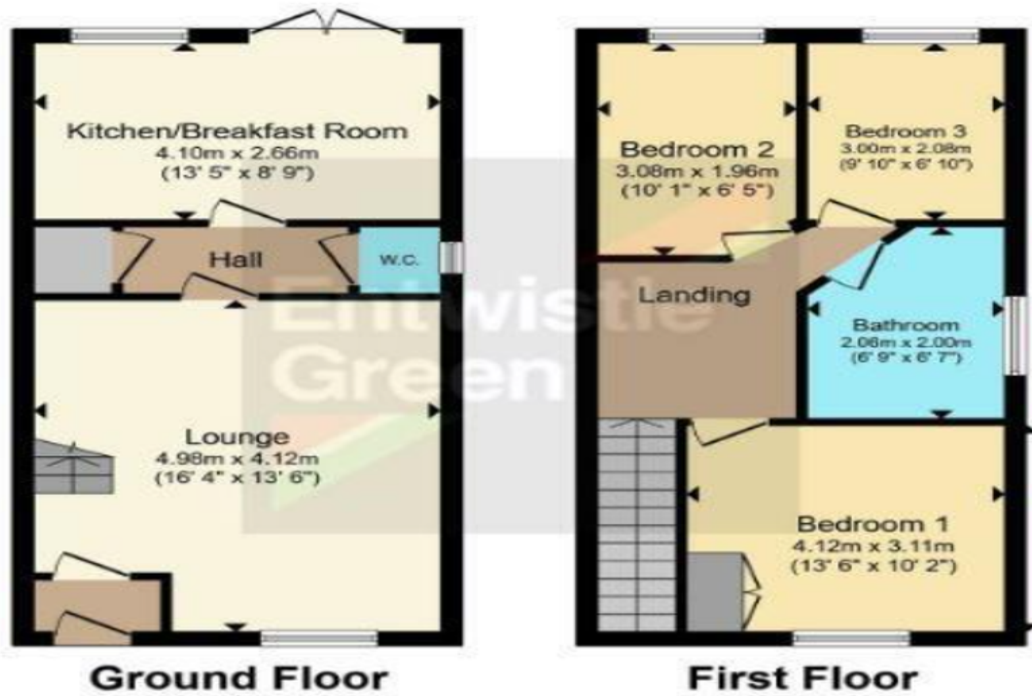
Water: Direct mains water

Sewerage: Standard UK domestic

Air conditioning: No

Broadband: ADSL copper wire

Mobile signal coverage: Good



Energy Efficiency Rating		
	Current	Potential
<i>Very energy efficient - lower running costs</i>		
(92-100) A		
(81-91) B		89
(69-80) C	74	
(55-68) D		
(39-54) E		
(21-38) F		
(1-20) G		
<i>Not energy efficient - higher running costs</i>		
England, Scotland & Wales	EU Directive 2002/91/EC	

Penshaw Close, Liverpool, Merseyside, L14 8YN

Contact your local branch today for more information on this property:

1 1, 1, 1, 1, www.bella-properties.co.uk

These particulars, whilst believed to be accurate are set out as a general outline only for guidance and do not constitute any part of an offer or contract. Intending purchasers should not rely on them as statements of representation of fact, but must satisfy themselves by inspection or otherwise as to their accuracy. No person in this firm's employment has the authority to make or give any representation or warranty in respect of the property.

